

YZ系列潜水泵专用三相异步电动机

YZ Series Three-phase Induction Motors for Submersible Pump

YZ 系列潜水泵专用三相异步电动机具有高效、节能、设计新颖、造型美观、噪声低、高转矩、振动小、结构紧凑、可靠性高等特点。该系列电机按电压分为低压和高压两种,该系列电机符合中华人民共和国机械行业标准 JB/T10869-2008 《中大型高、低电压潜水泵电动机（机座号 315-710）》。

我公司可根据用户要求设计、制造各种电压、各种频率，并向用户提供完善的技术服务。

YZ series three-phase asynchronous motor for submersible pump is characterized by high efficiency, energy saving, novel design, beautiful shape, low noise, high torque, small vibration, compact structure, high reliability. This series of machine according to the voltage divided into low pressure and high pressure two kinds, this series motors conform to the law of the People's Republic of machinery industry standard JB/T10869-2008 "large and medium high and low voltage submersible pump motor (stand, 315, - 710)".

Our company can according to customer request design, manufacture all kinds of voltage, all kinds of frequency, and provide the perfect technical service.

表 1 转速及功率的对应关系 (380V~660V)

机座号	定子铁心外径 mm	同步转速 (r/min)						可选电压 V
		1500	1000	750	600	500	375	
		功率 (KW)						
315	520	160	132	110	—	—	—	380 660
		185	160	132	110	—	—	
		200	185	160	132	110	—	
		220	200	185	160	132	—	
		250	220	200	185	160	—	
		280	250	220	200	185	—	
355	590	250	220	200	185	160	110	
		280	250	220	200	185	132	
		315	280	250	220	200	160	
		355	315	280	250	220	185	
400	670	315	280	250	220	185	132	
		—	315	280	250	200	160	
		—	—	315	280	220	185	
		—	—	—	315	280	200	
		—	—	—	—	315	220	

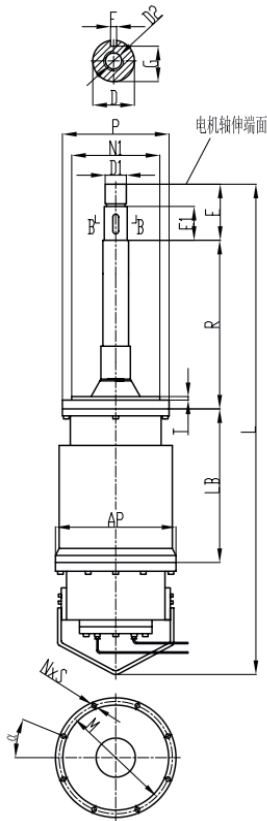


YZ 系列潜水泵专用三相异步电动机
YZ Series Three-phase Induction Motors for Submersible Pump

表 2 转速及功率的对应关系 (3KV~10KV)

机座号	定子铁心 外径 mm	同步转速 (r/min)								可选电压 KV
		1500	1000	750	600	500	375	300	250	
		功率 (KW)								
355	590	250	220	200	—	—	—	—	—	3 6
		280	250	220	200	—	—	—	—	
		315	280	250	220	200	—	—	—	
		355	315	280	250	220	—	—	—	
400	670	315	280	250	220	185	—	—	—	
		355	315	280	250	200	—	—	—	
		400	355	315	280	220	—	—	—	
		450	400	355	315	280	200	—	—	
450	740	500	450	400	355	280	250	220	—	
		560	500	450	400	315	280	250	—	
		630	560	500	450	355	315	280	—	
		710	630	560	500	400	355	315	—	
500	850	—	800	500	450	355	200	160	110	
		—	900	560	500	400	220	185	132	
		—	1000	630	560	450	250	200	160	
560	950	—	1000	710	560	500	280	220	160	
		—	1120	800	630	560	315	250	185	
		—	1250	900	710	630	355	280	200	
630	990	—	1120	1000	560	450	355	280	200	
		—	1250	1120	630	560	400	315	220	
		—	1400	—	750	630	450	355	250	
		—	—	—	—	—	500	400	280	
710	1120	—	—	—	—	710	560	450	315	
		—	—	—	—	800	630	500	355	

YZ 系列潜水泵专用三相异步电动机
YZ Series Three-phase Induction Motors for Submersible Pump



安装及外形尺寸

机座号	定子铁心外径 mm	安装及外形尺寸 mm																	
		AP	T	NI	P	α	M	N	S	R	D	E1	G	E	D1	F	D2	LB	L
315	520	ϕ 560	15	ϕ 470	ϕ 600	15°	ϕ 540	12	ϕ 17.5	510	ϕ 70	122	62.5	167	M48x2	20	M16	750	2000
355	590	ϕ 640	15	ϕ 530	ϕ 660	15°	ϕ 600	12	ϕ 17.5	630	ϕ 80	195	71	245	M72x2	22	M20	870	2300
400	670	ϕ 730	18	ϕ 630	ϕ 772	15°	ϕ 720	12	ϕ 22	710	ϕ 90	210	81	275	M72x2	25	---	970	2500
450	740	ϕ 810	18	ϕ 630	ϕ 772	15°	ϕ 740	12	ϕ 22	710	ϕ 100	225	90	275	M76x2	28	---	1100	2600
500	850	ϕ 1000	22	ϕ 730	ϕ 880	11.25°	ϕ 810	16	ϕ 27	710	ϕ 130	250	119	275	M76x2	32	---	1100	2600
560	950	ϕ 1100	22	ϕ 800	ϕ 950	11.25°	ϕ 880	16	ϕ 27	1007	ϕ 130	250	119	275	M90x2	32	---	1250	3100
630	990	ϕ 1150	25	ϕ 845	ϕ 1030	11.25°	ϕ 970	16	ϕ 27	1007	ϕ 140	300	128	300	---	36	---	1340	3200
710	1120	ϕ 1320	25	ϕ 950	ϕ 1030	9°	ϕ 1060	20	ϕ 27	1007	ϕ 180	300	165	300	---	45	---	1340	3200